

Directions to Fairlie moor launchsite from Dalry or Fairlie

For your sat-nav:

The Fairlie Moor launch site has GPS coordinates:

55° 43' 37" North, 4° 48' 40" West

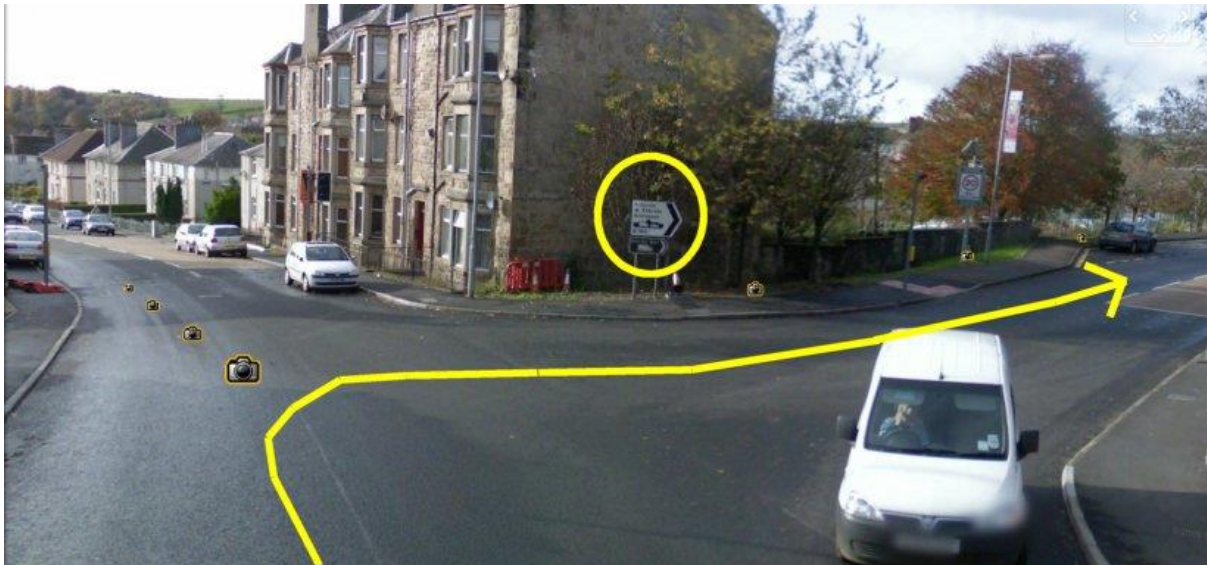
(North 55 degrees, 43.617 minutes; West 4 degrees, 48.667 minutes)

Directions from Dalry:

From the main high street of Dalry called New Street (the B780): at the first set of traffic lights, turn left into Townend street, signposted 'Irvine, A737':



Then immediately take the 1st right onto Roche way (B780) signposted 'Kilbirnie, W.Kilbride, Ardrossan, B780':



Now take the 3rd turning on your left (at traffic lights) into Sharron Street, signposted 'West Kilbride, Ardrossan, B780':



Sharron Street descends a hill and runs into West Kilbride Road.

Continue along West Kilbride Road (the B780) for 1 ½ miles. You will pass a cemetery which is on your right, and then you'll head out into the countryside.

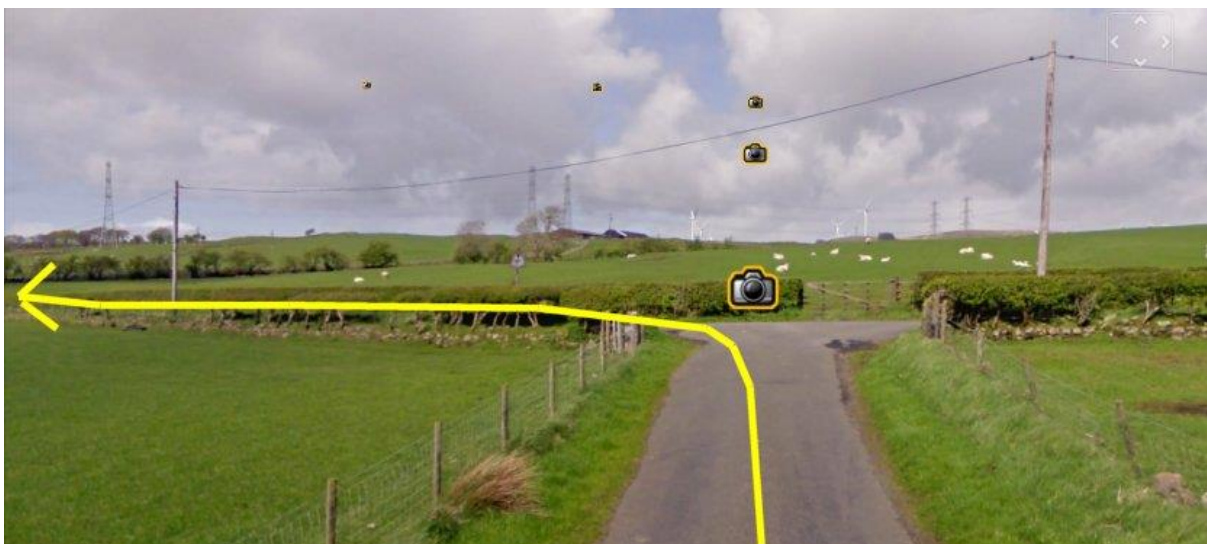
You'll pass a farm which is on your left then there's a sharp bend to the left: at the apex of this bend turn right into a narrow country lane:



Then take the 2nd turning on your right into another narrow country lane:



Follow this lane until its end, and then turn left onto the Fairlie moor road:



Follow the Fairlie moor road for 2 miles. You will pass a reservoir which is on your left, and a farm which is on your right at a zigzag bend.

You will pass the entrance to an old quarry which is now a carpark on your right, and then the launchsite is another hundred yards on the left, just as the road begins to turn left.



Launchsite:



Park on the level ground on the left.

Directions from Fairlie:

From the main road through Fairlie (the A78) head out of Fairlie heading south.



At the next roundabout continue straight on, on the A78:



Drive for ½ mile (3/4 kilometre) then turn left onto the Fairlie Moor road [signposted 'Dalry (Moor road)']:



Drive on the Moor road for 2 miles (4 kilometres) over the crest of the hill and through several cattle-grids. You will see the flying site on your right:



Park on the level ground on the right:

